

Man and the mountain

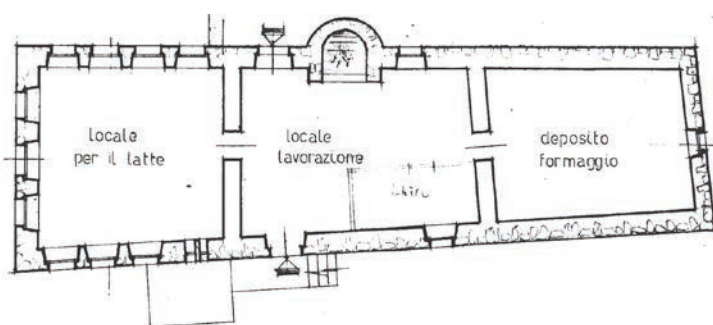
Alpine Hut

Pralungo

Alto



The alpine hut, located in the Municipality of San Zeno di Montagna, but owned by the Municipality of Brenzone, includes a vast territory divided in two distinct areas of pasture, **Pralungo Basso** and **Pralungo Alto**, separated by a strip of beech woods. The largest rangeland is **Pralungo Basso**, although it is not as extensive as it used to be because of the propagation of vast hazel forests. The pasture of *Pralungo Alto*, that includes the hamlet of “*Due Pozze*”, is located on a strip of land that developed mainly in length from the detrital filling of a small fault, as the name of the hut indicates (literally “long pasture”).



The “*baito*” of **Pralungo Alto** is a little different from other alpine huts of the area. Some of its features recall the more recent huts of the 19th century: along with the two traditional rooms, the “*logo del latte*” and the *logo del fogo*, this baito includes a third one used for the ripening of cheese, the “*casàra*” facing the slopes and partially dug into the rock. As a result, the characteristic fireplace is located here on the side of the building instead of its far end. Finally, the “*logo del latte*” overlooking the valley with its vaulted barn underneath, is not semi-circular but rectangular.

The “*logo del latte*” still retains its original and characteristic flooring consisting of a pavement of white pebbles.

